

DOCUMENT NUMBER 60-90010	REVISION NUMBER A	DOCUMENT TITLE SIEMENS EMOTION CT SELF PROPELLED TRUCK	PAGE 1 of 11
------------------------------------	-----------------------------	--	-----------------

**Calutech Mobile Solutions, Inc.
3550 179th Street, Unit-C
Hammond, Indiana 46323**



SITE PLANNING GUIDE

SIEMENS EMOTION CT SELF PROPELLED TRUCK

**Document No. 60-90010
Revision A
12 February 2004**

DOCUMENT NUMBER 60-90010	REVISION NUMBER A	DOCUMENT TITLE SIEMENS EMOTION CT SELF PROPELLED TRUCK	PAGE 2 of 11
------------------------------------	-----------------------------	--	-----------------

LIST OF REVISIONS

<u>Revisions</u>	<u>Description</u>	<u>Date</u>
A	Initial Release	02/12/04

DOCUMENT NUMBER 60-90010	REVISION NUMBER A	DOCUMENT TITLE SIEMENS EMOTION CT SELF PROPELLED TRUCK	PAGE 3 of 11
------------------------------------	-----------------------------	--	-----------------

TABLE OF CONTENTS

<u>Section</u>	<u>Page</u>
1. Support Pad Requirements	4
2. Customer Power Requirements	5
3. Telephone and Data Service Requirements	7
Figure 1 – Russellstoll Service Outlet	8
Figure 2 – Russellstoll Chart	9
Figure 3 – Plan View Trailer and Pad Layout	10
Figure 4 – Curb Side Elevation	11

DOCUMENT NUMBER 60-90010	REVISION NUMBER A	DOCUMENT TITLE SIEMENS EMOTION CT SELF PROPELLED TRUCK	PAGE 4 of 11
------------------------------------	-----------------------------	--	-----------------

SECTION I Support Pad Requirements

The following is a list of recommendations and requirements for a concrete support pad. However, due to varying site conditions, the actual pad design should be prepared by an appropriately licensed structural or architectural engineer.

Minimum Support Pad Requirements

A front pad measuring 10'-0" x 12'-1-1/2" and a rear pad measuring 10'-0" x 12'-4" located as shown on Figure 3, and Figure 4 will provide the minimum requirements. The heavier hatching represents the minimum support pad.

Recommended Support Pad

A full pad measuring 10'-0" x 37'-8", located as shown on Figure 3 and Figure 4 as all hatching, is the recommended support pad.

Recommended Service Pad

A full pad measuring 20'-0" x 47'-0", located as shown on Figure 3 and Figure 4 is recommended to provide service access.

Support Pad Depth

Recommendations for the width and length of the pad are given above. Based upon the truck weight of 29,800 lbs. total (11,700 lbs. front, 31,500 lbs. rear) and existing site conditions, the depth should be determined by a local contractor. It is recommended that non-ferrous reinforcement materials be used for pad reinforcement.

Support Pad Levelness

The support pad must be level to ensure proper operation of the CT system. The pad must not exceed .125" deviation in 10'-0". If the minimum support pads are selected, rather than the recommended single pad, they must also meet this specification.

CALUTECH MOBILE SOLUTION, INC. 3550 179 TH ST. UNIT-C HAMMOND, IN 46323	NOTICE: THIS DOCUMENT IS PROPRIETARY AND ITS CONTENTS ARE THE EXCLUSIVE PROPERTY OF CALUTECH MOBILE SOLUTIONS, INC. THIS DOCUMENT MAY NOT BE REPRODUCED IN ANY FORM WHATSOEVER, WITHOUT PRIOR WRITTEN PERMISSION FROM CALUTECH MOBILE SOLUTIONS, INC.
--	---

DOCUMENT NUMBER 60-90010	REVISION NUMBER A	DOCUMENT TITLE SIEMENS EMOTION CT SELF PROPELLED TRUCK	PAGE 5 of 11
------------------------------------	-----------------------------	--	-----------------

Vehicle Access

A firm, level surface is required around the mobile unit to provide access to the mobile unit, aid in-patient handling and servicing the unit.

Steel Reinforced Concrete Pad

Should this pad be shared with a MRI service, the use of steel reinforcing must be discussed with a MRI system manufacturer.

SECTION II Customer Power Requirements

Electrical Service

480 Volt A.C., 3 Phase, fused at 150 Amps.

Configuration

L1, L2,L3, neutral and ground.

Frequency

- 60Hz \pm 0.5%
- Phase Balance: +2% maximum phase-to-phase line voltage difference lowest phase.
- Maximum voltage variation: \pm 5% from nominal steady state (under the worst case conditions of line voltage)

DOCUMENT NUMBER 60-90010	REVISION NUMBER A	DOCUMENT TITLE SIEMENS EMOTION CT SELF PROPELLED TRUCK	PAGE 6 of 11
------------------------------------	-----------------------------	--	-----------------

Connector Type

The unit is supplied with a 50-foot cable and male connector. The connector is Russellstoll 200 Amp plug #DS2504MP000.

Customer Facility

The facility must have the matching receptacle as specified in Figure 1 and Figure 2. The receptacle is Russellstoll #DF2504FRABO.

NOTE:

If power is lost to the unit, it is imperative that the generator be started to maintain environmental controls. Diesel fuel levels should also be checked.

Voltage Surges

Transient voltage variations caused by external loads must not:

- Exceed +5%
- Exceed five cycles duration
- Occur more than ten times an hour

Ground Conductor

An insulated ground conductor sized in accordance with National, State, and local codes shall be installed between the facility vault and the CT System ground bus location in the power distribution unit.

NOTE:

The standard connector for the unit is Russellstoll # DS2504MP000... If an existing site currently implements a different connector or connector configuration, please contact Calutech Mobile Solutions, Inc. to arrange for a compatible power connector before the unit leaves the facility.

CALUTECH MOBILE SOLUTION, INC. 3550 179 TH ST. UNIT-C HAMMOND, IN 46323	NOTICE: THIS DOCUMENT IS PROPRIETARY AND ITS CONTENTS ARE THE EXCLUSIVE PROPERTY OF CALUTECH MOBILE SOLUTIONS, INC. THIS DOCUMENT MAY NOT BE REPRODUCED IN ANY FORM WHATSOEVER, WITHOUT PRIOR WRITTEN PERMISSION FROM CALUTECH MOBILE SOLUTIONS, INC.
--	---

DOCUMENT NUMBER 60-90010	REVISION NUMBER A	DOCUMENT TITLE SIEMENS EMOTION CT SELF PROPELLED TRUCK	PAGE 7 of 11
------------------------------------	-----------------------------	--	-----------------

[SECTION III Telephone and Data Service Requirements](#)

Telephone Service

- The unit is supplied with three telephone connections.
- The connector type that is used is a model Hubbell PH-6595 (inlet), supplied by Calutech Mobile Solutions, Inc.
- Two Hubbell PH-6599 50 foot telephone-connecting cables are included with the unit. If a third cable is needed, the customer must purchase it.
- The customer is required to purchase and install three Hubbell phone connectors, model PH-6597 (weatherproof phone outlets) for use at the site.

Data Service

An adapter to connect the medical system is required if a site plans to use existing 10Base2 (coax) Ethernet connections. The adapter will convert between a 10Base2 coaxial connector and a 100BaseT RJ-45 type connector. The mobile unit requires an RJ-45 type connector.

- The unit is supplied with one data line connection.
- The customer is required to purchase the data connection cable. The data connection utilizes a 50'-0" UTP CAT 5 cable with an RJ-45 connector.

NOTE:

Telephone and Data Services may vary based on customer requirements. Confirm exact connections on the trailer.

CALUTECH MOBILE SOLUTION, INC. 3550 179 TH ST. UNIT-C HAMMOND, IN 46323	NOTICE: THIS DOCUMENT IS PROPRIETARY AND ITS CONTENTS ARE THE EXCLUSIVE PROPERTY OF CALUTECH MOBILE SOLUTIONS, INC. THIS DOCUMENT MAY NOT BE REPRODUCED IN ANY FORM WHATSOEVER, WITHOUT PRIOR WRITTEN PERMISSION FROM CALUTECH MOBILE SOLUTIONS, INC.
--	---

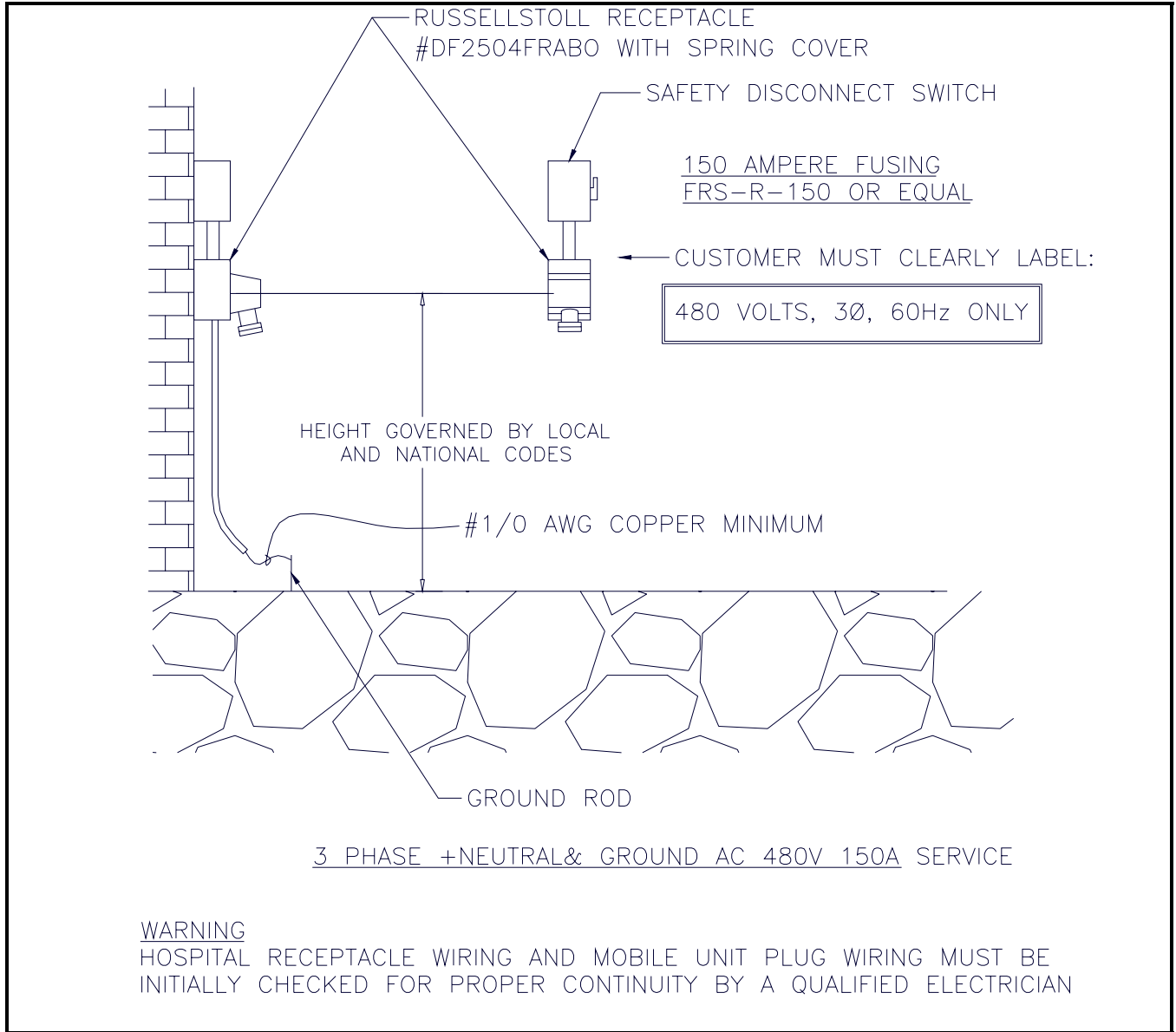


Figure 1: Russellstoll Service Outlet

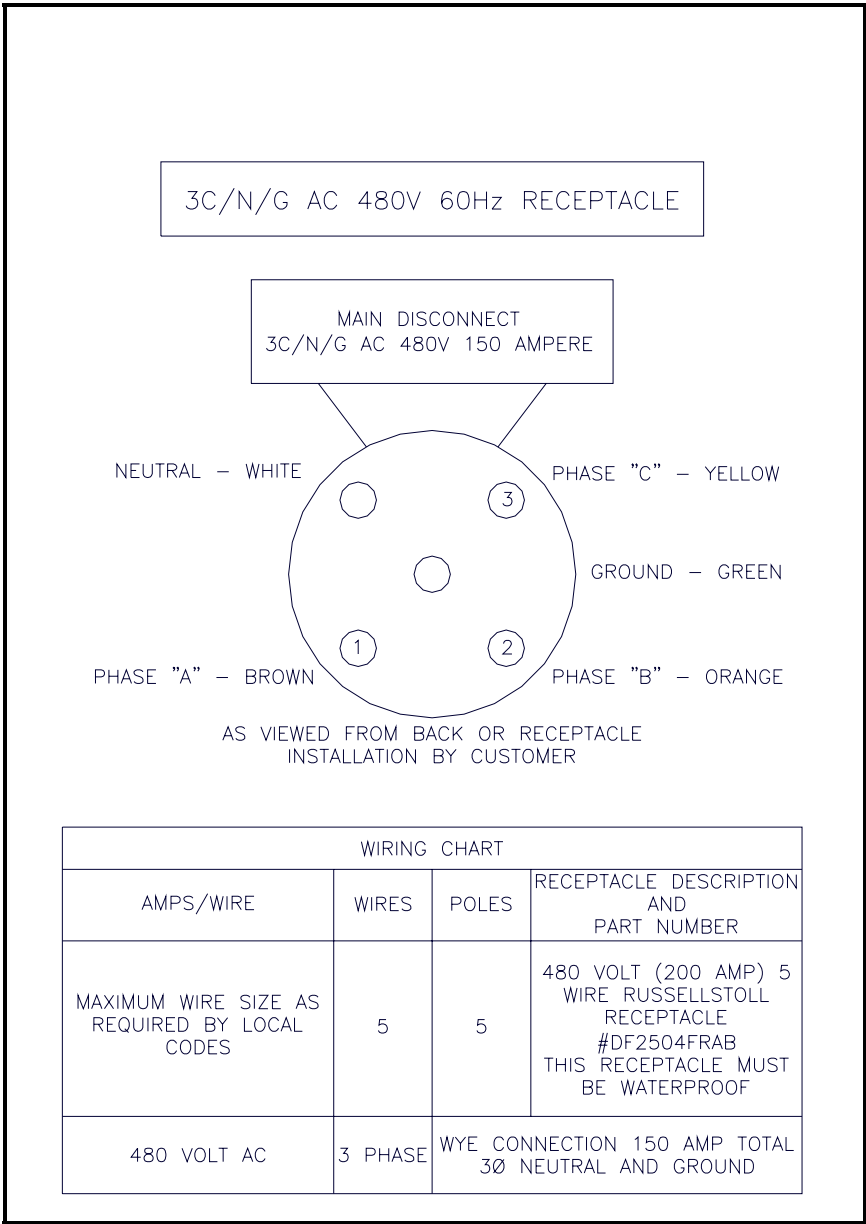


Figure 2: Russellstoll Chart

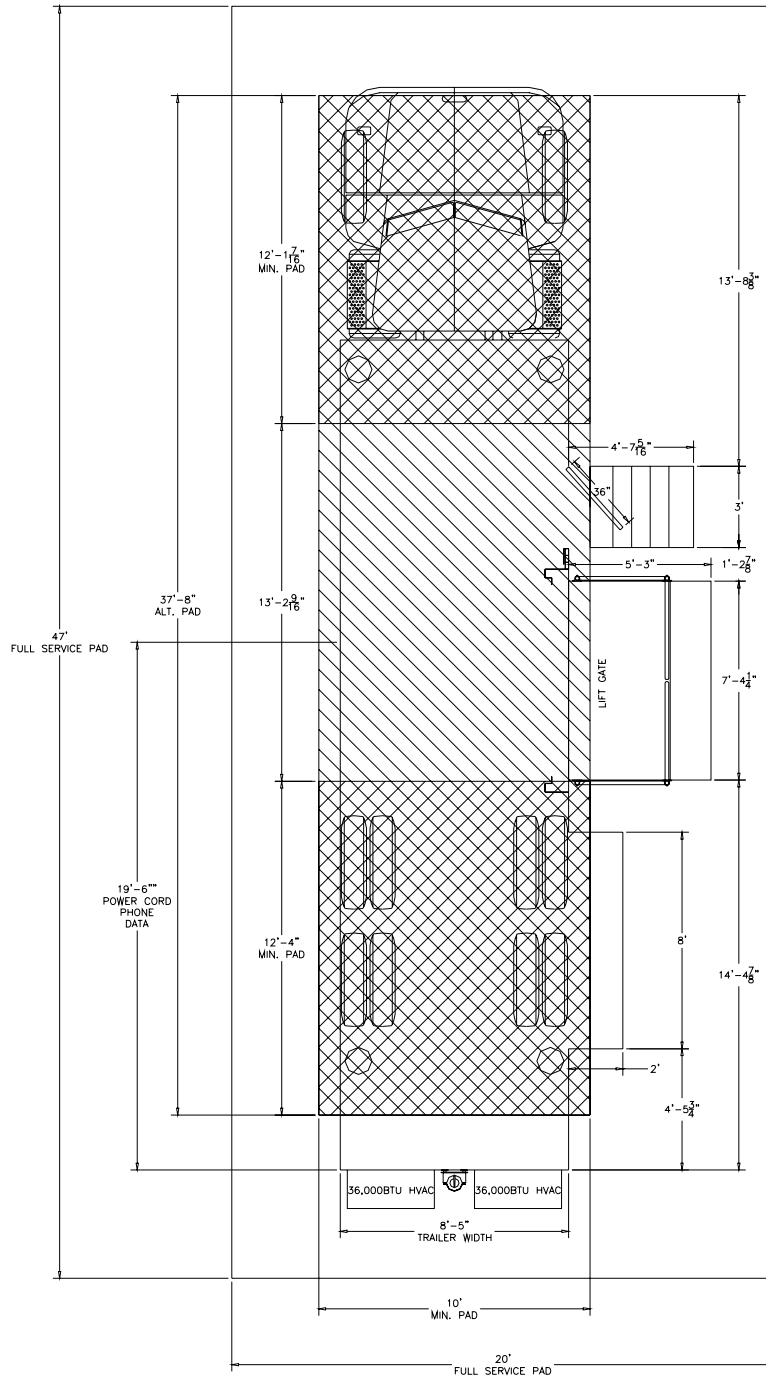


Figure 3: Plan View Truck and Pad Layout

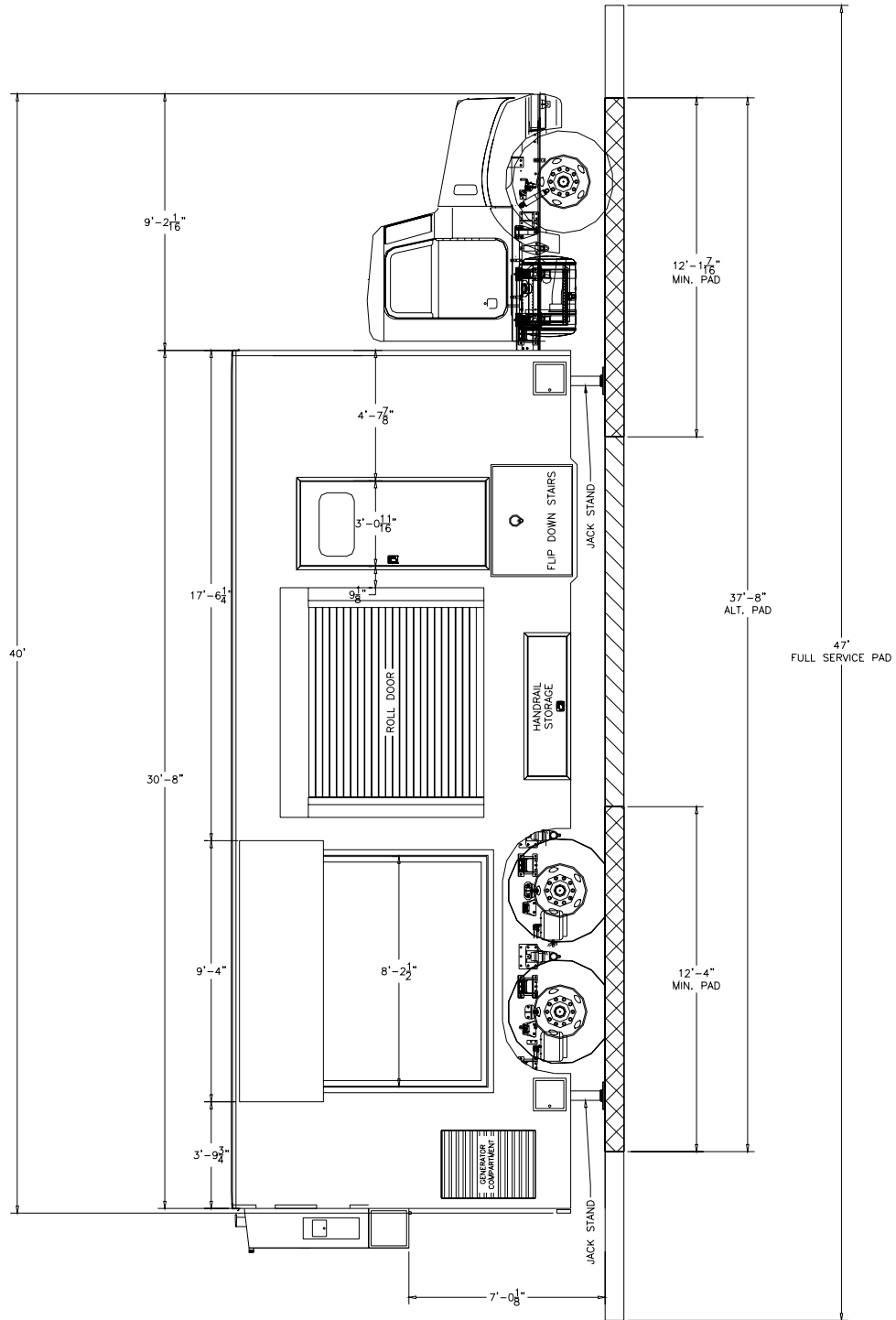


Figure 4: Curb Side Elevation